

AirLink P2P IP Camera User Manual

PC Set Up:

- 1 Install the IPsearch software provided with your camera (The software will create a shortcut on your desktop)



- 2 Connect your camera to your access point (AP) and power supply



- 3 After connecting your camera to the access point and power source. Connect your computer to your local wireless internet access and run the IPsearch

Search Tool

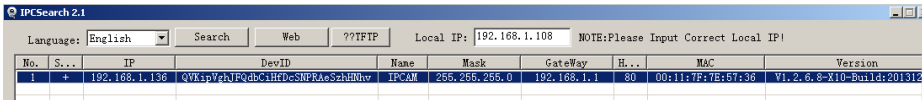
Network Card: Realtek PCIe GBE Family Controller - Packet Sche

NO	IP Address	Name	MAC Address	Version	port
0	192.168.2.101	IPCAM	00:E0:F8:04:B3:71	V7.1.4.4.1-20150908	80

The program will automatically search for existing IP cameras signals, but if the search is not automatic, just click in Search

4

After scanning for all available IP cameras, select the desired one and double click on it (This will open an Internet Explorer Window)

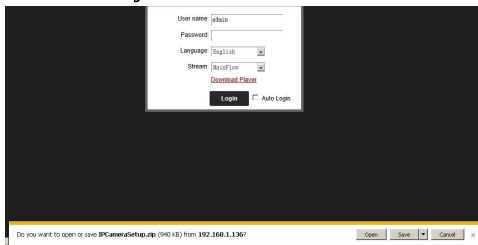


Internet Explorer Window



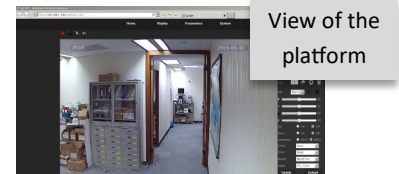
5

For first time users of IP-search: Download the IPsearch player and install it in your PC



6

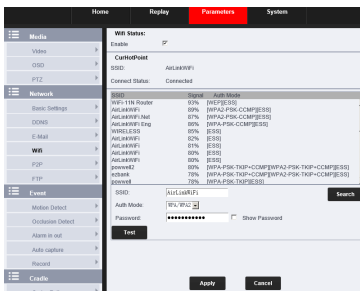
After installing the IP-search player login using the predetermined user name: admin and password: admin (Which can be edited after you access the PCSearch platform)



View of the platform

7

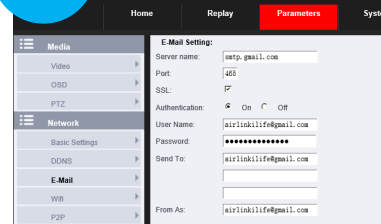
WiFi Settings



- 1) Click "Parameters" then under network click "WiFi" to enter the settings
- 2) Wifi Status: Tick the blank to enable the Wifi.
- 3) Search: Click it, the wifi around the camera will appear
- 4) Select the desired WIFI and insert the password
- 5) Apply the changes

8

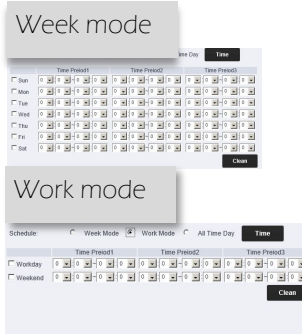
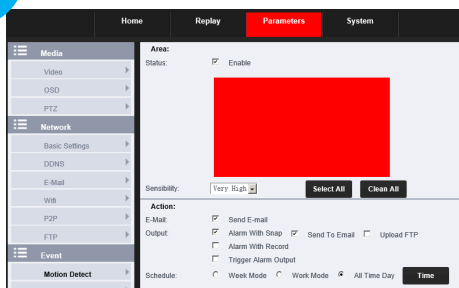
EMAIL settings



- 1) Click "Parameters" then under network click "E-mail" to enter the settings
- 2) Server name and Port was set by default.
- 3) Send To: Insert the E-mail where you want to receive the notifications for alarms

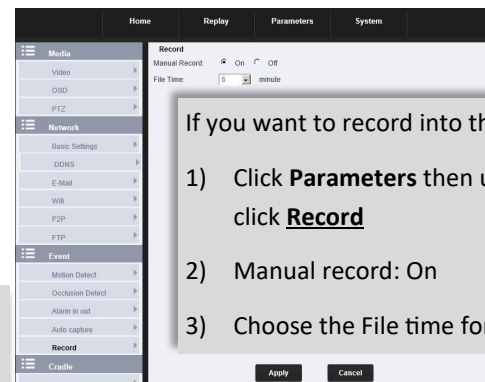
9

Motion Detection



10

SD Card Settings



- If you want to record into the SD card.
- 1) Click **Parameters** then under **Event** click **Record**
 - 2) Manual record: On
 - 3) Choose the File time for the record

Click Parameters and under Event select Motion Detection
Click in Enable
Select the degree of sensibility of the motion detection
Choose the way you receive the alarms (email, FTP, snap)
In Schedule you can select the mode including week mode, work mode and all time day
Click the button "Time" then select the time period that motion detection works

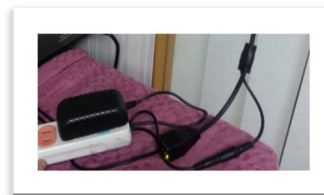
Hardware Installation

1 Connect camera to power adaptor



2

Connect power adaptor to power source (12 V or 5V following cameras type)

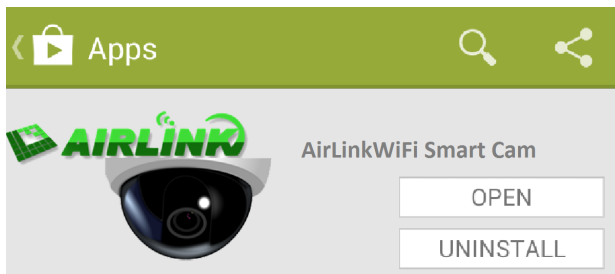


Location and environment precautions

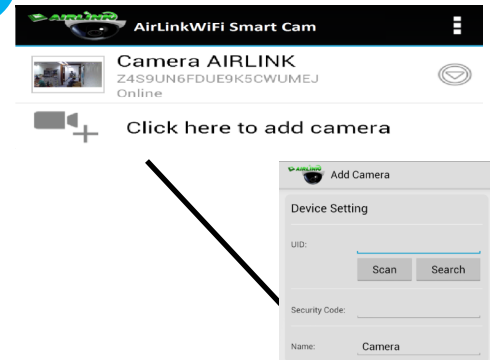
- The environment temperature should be between -40° to 65°C depending on the camera enclosure ABS or Metal material
- Do not install it near any strong electromagnetic interference source

Mobile Set Up:

1 Download the app "AirLinkWiFi Smart Cam" and install it in your smartphone



2 Add Camera



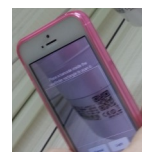
You can add cameras by two ways

- 1) Scan the QR Code from the camera with the app
- 2) Manually directly insert the UID No. written in the camera under the QR Code

****You can find the UID also in the PCSearch software under Parameters—P2P)****

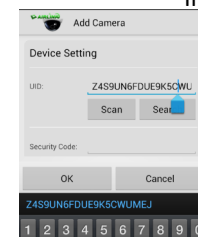
- 3) Insert the Security Code (The predetermined security code is **admin**)

Scan QR Code

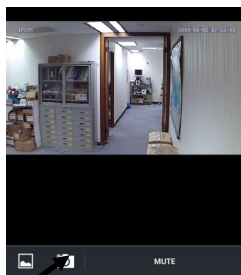


Insert UID number

manually



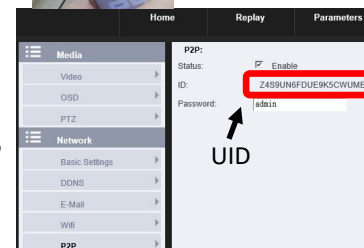
3 Voice and Screenshot features



Snapshot feature

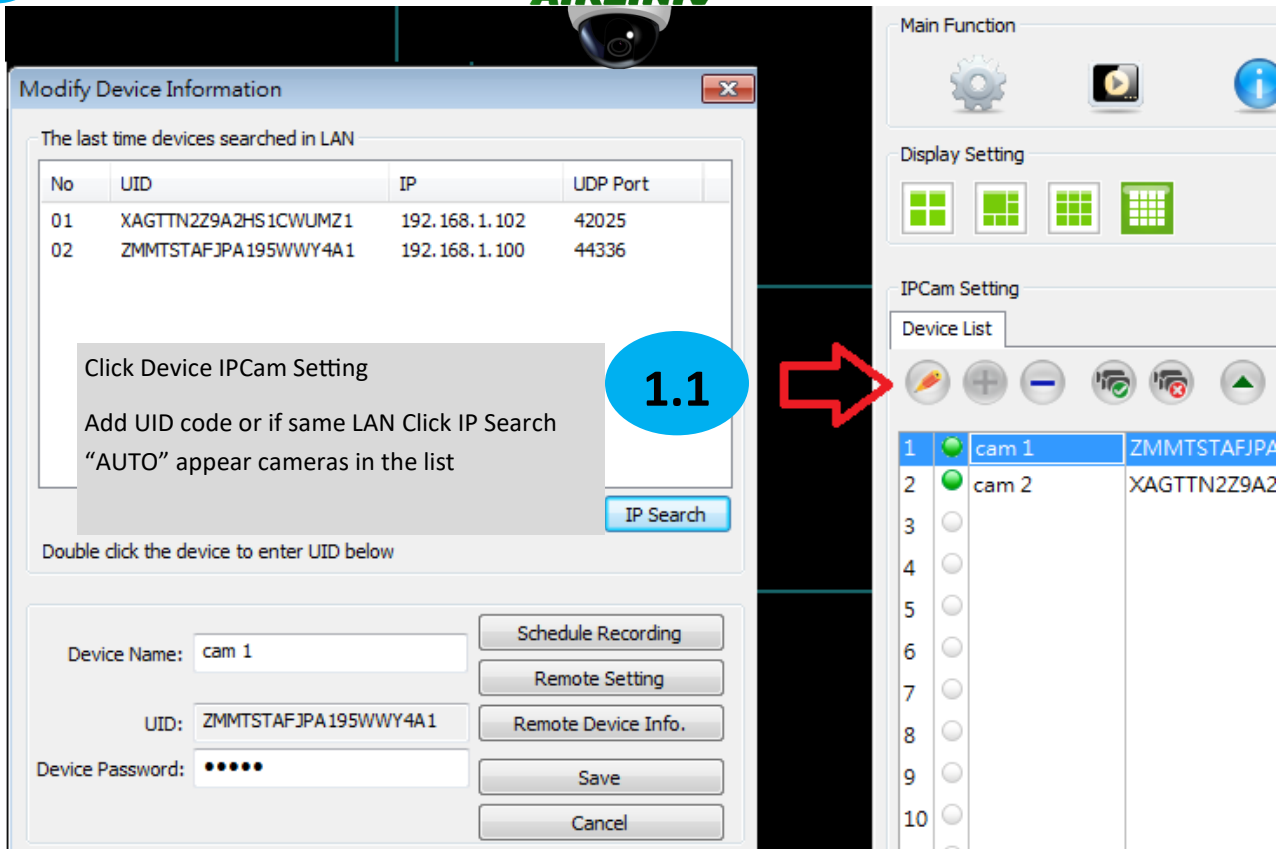
Voice Features

- Talk through the camera: If you connect speakers in your P2P IP Camera, you can talk through your phone and the people close to the camera can hear.
- Hear the environment: If you connect a microphone to the camera you can hear the environment in your phone.
- Taking snapshots: You can take individuals snapshots from your phone
- Viewing your snapshots: You can find the pictures in the gallery icon next to the camera icon.



PC Multiple Cameras Remote viewing

1 Download PCAirLinkP2P

1.1

Click Device IPCam Setting
Add UID code or if same LAN Click IP Search
"AUTO" appear cameras in the list

IP Search

Double click the device to enter UID below

Device Name: cam 1 Schedule Recording
UID: ZMMTSTAFJPA195WWY4A1 Remote Setting
Device Password: ●●●● Remote Device Info.
Save
Cancel

Main Function

Display Setting

IPCame Setting

Device List

1	cam 1	ZMMTSTAFJPA
2	cam 2	XAGTTN2Z9A2
3		
4		
5		
6		
7		
8		
9		
10		

2

Email Setting

Main Function

Email information

Email subject: Alarm:[DevName]

Email content:

Alarm from [DevName]([UID])Event: [Event]

Email server setting

SMTP host*: smtp.gmail.com

SMTP host port : 587 SSL

Mail From : leannairlinkwifinet@gmail.com

Recipient*: airlinkilife@gmail.com

(Seprate different email by ',')

Enable SMTP Authenticated

Account: leannairlinkwifinet@gmail.com

Password: ●●●●●●●●

Test

Click Main Function , alarm email set up as right side image